

ODM

Office Data Manager

„Office Data Manager“ is an evaluation and configuration program for weld and parameter data of the control computer 2000mc. All the weld data set up by the 2000mc can be copied, compressed, graphically analysed, statistically evaluated and printed out without any problem on the workplace PC.

It was our task years ago to supply our quality-oriented customers with the control computer 2000mc that controls all the important values for the weld process, and records, displays and stores all relevant data. This new software version means that, as well as other technical improvements, we are now in the position to integrate the system into networks. This has the advantage that the data does not have to be stored locally in the hard disk of the control computer. In addition, the weld data can be accessed from any location within the network. The teleservice has created a form of service for these computer-controlled machines that implements a global, online technical support of our machines.

Either directly through network connection, or offline, if the weld data has been stored on a changeable data carrier. A process analysis or optimisation can now be carried out in a transparent form. Fig. 1 is an example illustrating many others, showing the function „Graphic Analysis“.

It goes without saying the known numeric and graphic analytical processes for process and/or machine capability, which supply important information on the properties of the recorded measurement series, were taken over into the service range (see fig. 2).

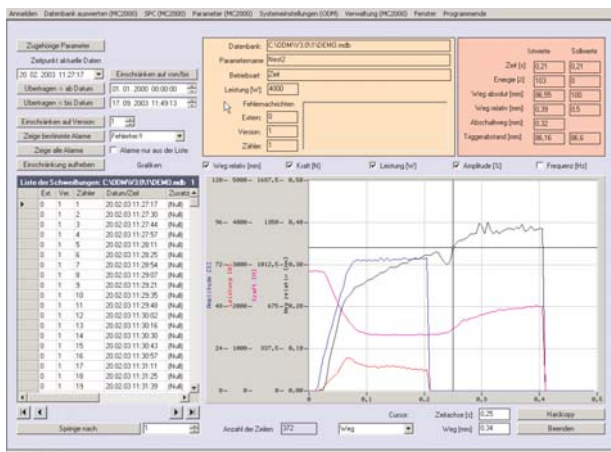


Fig. 1: Function „Graphic Analysis“

The Office Data Manager now completes and rounds off this product portfolio. The user has access to the data generated on the 2000mc through a user-friendly software at his or her own workplace (programming language C# for .NET operation systems).

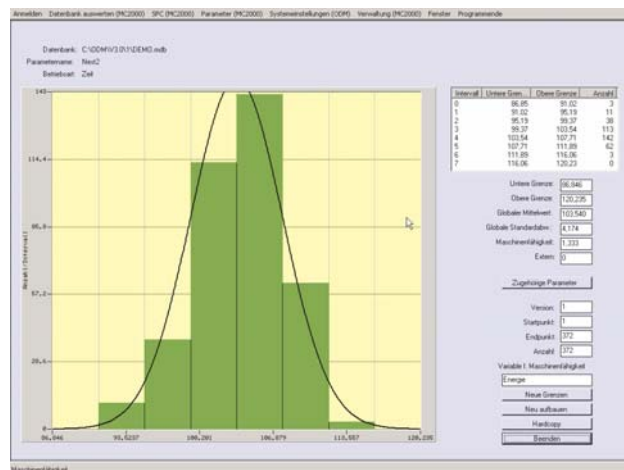


Fig. 2: Function „Machine Capability“

The program is database-oriented and structured (ACCESS), which means that it can be switched over without any problem online to several languages.

This tool is designed for the machine set-up technician, who wishes to find the optimal parameters by means of welding curves; also for colleagues in quality assurance, who can now check how far the parts can be reproduced in manufacture.

The software runs under WINDOWS2000 and WINDOWS XP operating systems.